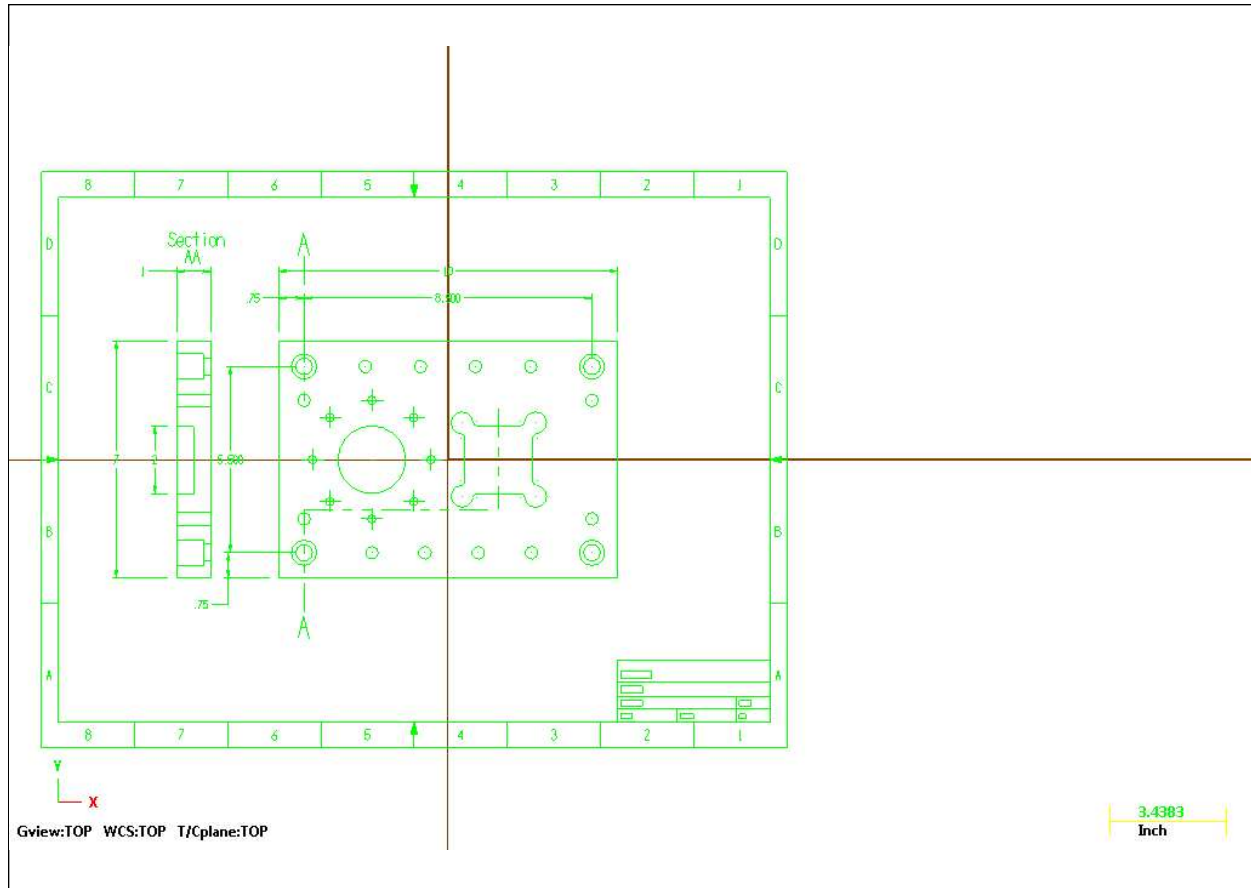


## *Generic Mill*

### GENERAL INFORMATION

PROJECT NAME:	Test	
CUSTOMER NAME:	Shopware	
PROGRAMMER:	Dave	
DRAWING:	1234	REVISION: A
DATE:	Friday, October 29, 2010	
TIME:	11:41 AM	

### 2D\_DWG\_TP.MCX-5



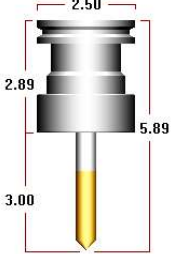
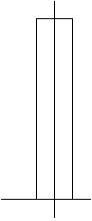
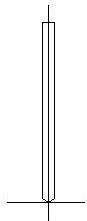
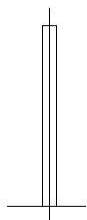
### COMMENTS

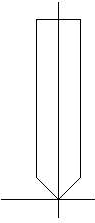
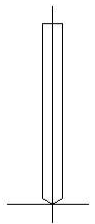
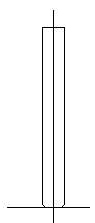
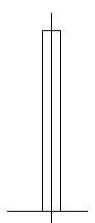
TEST

## 2D\_DRAWING1.NCI

CYCLE TIME: 0 HOURS, 0 MINUTES, 0 SECONDS

### TOOL LIST

	<p>           TYPE: Spot Drill            MFG CODE: -            HOLDER: C4C3-0040            NUMBER: 2            LENGTH OFFSET: 0            DIAMETER OFFSET: 0            FLUTE LENGTH: 2.0            OVERALL LENGTH: 3.0            TIP ANGLE: 90.0            CORNER RADIUS: 0.0            # OF FLUTES: 2  <b>#2 - 0.5000 SPOT DRILL - 1/2 SPOTDRILL</b> </p>
<p>USED BY OPERATION: # 1 MIN Z: -0.155 Drill/Counterbore Spot .25 Dia Holes</p>	
	<p>           TYPE: Endmill1 Flat            MFG CODE: -            HOLDER: -            NUMBER: 7            LENGTH OFFSET: 241            DIAMETER OFFSET: 241            FLUTE LENGTH: 2.0            OVERALL LENGTH: 3.75            TIP ANGLE: 180.0            CORNER RADIUS: 0.0            # OF FLUTES: 4  <b>#7 - 0.7500 ENDMILL1 FLAT - 3/4 FLAT ENDMILL</b> </p>
<p>USED BY OPERATION: # 2 MIN Z: 0.0 Contour (2D) -</p>	
<p>USED BY OPERATION: # 8 MIN Z: -0.5 Pocket (Standard) -</p>	
	<p>           TYPE: Drill            MFG CODE: -            HOLDER: -            NUMBER: 3            LENGTH OFFSET: 0            DIAMETER OFFSET: 0            FLUTE LENGTH: 2.0            OVERALL LENGTH: 3.0            TIP ANGLE: 118.0            CORNER RADIUS: 0.0            # OF FLUTES: 2  <b>#3 - 0.2010 DRILL - NO. 7 DRILL</b> </p>
<p>USED BY OPERATION: # 3 MIN Z: -0.75 Peck Drill -</p>	
	<p>           TYPE: Tap RH            MFG CODE: -            HOLDER: -            NUMBER: 1            LENGTH OFFSET: 0            DIAMETER OFFSET: 0            FLUTE LENGTH: 2.0            OVERALL LENGTH: 3.0            TIP ANGLE: 180.0            CORNER RADIUS: 0.0            # OF FLUTES: 1  <b>#1 - 0.2500 X 20.00 TAP RH - 1/4-20 TAPRH</b> </p>
<p>USED BY OPERATION: # 4 MIN Z: -0.75 Tap -</p>	

	<p>           TYPE: Spot Drill            MFG CODE: -            HOLDER:            NUMBER: 5            LENGTH OFFSET: 0            DIAMETER OFFSET: 0         </p> <p>           FLUTE LENGTH: 2.0            OVERALL LENGTH: 3.0            TIP ANGLE: 90.0            CORNER RADIUS: 0.0            # OF FLUTES: 2         </p> <p><b>#5 - 0.7500 SPOT DRILL - 3/4 SPOTDRILL</b></p>
<p>USED BY OPERATION: # 5 MIN Z: -0.2175 Drill/Counterbore -</p>	
	<p>           TYPE: Drill            MFG CODE: -            HOLDER:            NUMBER: 6            LENGTH OFFSET: 0            DIAMETER OFFSET: 0         </p> <p>           FLUTE LENGTH: 2.0            OVERALL LENGTH: 3.0            TIP ANGLE: 118.0            CORNER RADIUS: 0.0            # OF FLUTES: 2         </p> <p><b>#6 - 0.3480 DRILL - LTR. S DRILL</b></p>
<p>USED BY OPERATION: # 6 MIN Z: -0.9545 Peck Drill -</p>	
	<p>           TYPE: Reamer            MFG CODE: -            HOLDER:            NUMBER: 4            LENGTH OFFSET: 0            DIAMETER OFFSET: 0         </p> <p>           FLUTE LENGTH: 2.0            OVERALL LENGTH: 3.0            TIP ANGLE: 180.0            CORNER RADIUS: 0.0            # OF FLUTES: 2         </p> <p><b>#4 - 0.3750 REAMER - 3/8 REAMER</b></p>
<p>USED BY OPERATION: # 7 MIN Z: -0.75 Bore #1 (feed-out) -</p>	
	<p>           TYPE: Endmill1 Flat            MFG CODE: -            HOLDER:            NUMBER: 8            LENGTH OFFSET: 235            DIAMETER OFFSET: 235         </p> <p>           FLUTE LENGTH: 0.5            OVERALL LENGTH: 2.5            TIP ANGLE: 180.0            CORNER RADIUS: 0.0            # OF FLUTES: 4         </p> <p><b>#8 - 0.2500 ENDMILL1 FLAT - 1/4 FLAT ENDMILL</b></p>
<p>USED BY OPERATION: # 9 MIN Z: -0.5 Pocket (Remachining) -</p>	